

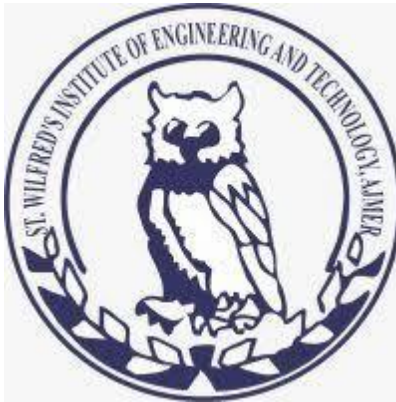
# LAB MANUAL

**Lab Name :** DIGITAL IMAGE PROCESSING LAB

**Lab Code :** 8CS7A

**Branch :** COMPUTER SCIENCE & ENGINEERING

**Year :** 4<sup>rd</sup> Year



Department of Mechanical Engineering  
**St. Wilfred's Institute of Engineering & Technology, Ajmer**  
(RTU, Kota)

## SYLLYBUS

### 8CS7A Digital Image Processing lab(Common to Comp. Engg. & Info. Tech)

Class: VIII Sem. B.Tech.	Evaluation
Branch: Computer Engg.	Examination Time = Three (3) Hours
Schedule per Week	Maximum Marks = 50
Practical Hrs: 2	[Mid-term (60) & End-term (40)]

S. No.	List of Experiment
1	Color image segmentation algorithm development
2	Wavelet/vector quantization compression
3	Deformable templates applied to skin tumor border finding
4	Helicopter image enhancement
5	High-speed film image enhancement
6	Computer vision for skin tumor image evaluation
7	New Border Images

# Index

Lab 1: Write a program for image enhancement

Lab2: Write a program for image compression

Lab3: Write a program for color image processing

Lab4: Write a program for image segmentation

Lab 5: Write a program for image morphology

Lab 6: Image Restoration

Lab 7: Edge detection

Lab 8: Blurring 8 bit color versus monochrome

Mini Project (Select One)

1. Take a hand written document, Perform preprocessing and try to segment into characters
2. Take an image, design fuzzy rules for content based image retrieval.
3. Take an image, design a neural network for content based image retrieval.

## LAB 1: Write a program for image enhancement

### Adjusting Intensity Values to a Specified Range

You can adjust the intensity values in an image using the `imadjust` function, where you specify the range of intensity values in the output image.

For example, this code increases the contrast in a low-contrast grayscale image by remapping the data values to fill the entire intensity range [0, 255].

```
I = imread('pout.tif');
J = imadjust(I);
imshow(J)
figure, imhist(J,64)
```

This figure displays the adjusted image and its histogram. Notice the increased contrast in the image, and that the histogram now fills the entire range.

### Specifying the Adjustment Limits

You can optionally specify the range of the input values and the output values using `imadjust`. You specify these ranges in two vectors that you pass to `imadjust` as arguments. The first vector specifies the low- and high-intensity values that you want to map. The second vector specifies the scale over which you want to map them.

For example, you can decrease the contrast of an image by narrowing the range of the data. In the example below, the man's coat is too dark to reveal any detail. `imadjust` maps the range [0,51] in the `uint8` input image to [128,255] in the output image. This brightens the image considerably, and also widens the dynamic range of the dark portions of the original image, making it much easier to see the details in the coat. Note, however, that because all values above 51 in the original image are mapped to 255 (white) in the adjusted image, the adjusted image appears washed out.

```
I = imread('cameraman.tif');
J = imadjust(I,[0 0.2],[0.5
1]); imshow(I)
figure, imshow(J)
```

### Setting the Adjustment Limits Automatically

To use `imadjust`, you must typically perform two steps: View the histogram of the image to determine the intensity value limits. Specify these limits as a fraction between 0.0 and 1.0 so that you can pass them to `imadjust` in the [low\_in high\_in] vector.

For a more convenient way to specify these limits, use the `stretchlim` function. (The `imadjust` function uses `stretchlim` for its simplest syntax, `imadjust(I)`.)

This function calculates the histogram of the image and determines the adjustment limits automatically. The `stretchlim` function returns these values as fractions in a vector that you can pass as the `[low_in high_in]` argument to `imadjust`; for example:

```
I = imread('rice.png');  
J = imadjust(I,stretchlim(I),[0 1]);
```

By default, `stretchlim` uses the intensity values that represent the bottom 1% (0.01) and the top 1% (0.99) of the range as the adjustment limits. By trimming the extremes at both ends of the intensity range, `stretchlim` makes more room in the adjusted dynamic range for the remaining intensities. But you can specify other range limits as an argument to `stretchlim`. See the `stretchlim` reference page for more information.

### Gamma Correction

`imadjust` maps low to bottom, and high to top. By default, the values between low and high are mapped linearly to values between bottom and top. For example, the value halfway between low and high corresponds to the value halfway between bottom and top.

`imadjust` can accept an additional argument that specifies the gamma correction factor. Depending on the value of gamma, the mapping between values in the input and output images might be nonlinear. For example, the value halfway between low and high might map to a value either greater than or less than the value halfway between bottom and top.

Gamma can be any value between 0 and infinity. If gamma is 1 (the default), the mapping is linear. If gamma is less than 1, the mapping is weighted toward higher (brighter) output values. If gamma is greater than 1, the mapping is weighted toward lower (darker) output values.

The figure below illustrates this relationship. The three transformation curves show how values are mapped when gamma is less than, equal to, and greater than 1. (In each graph, the x-axis represents the intensity values in the input image, and the y-axis represents the intensity values in the output image.)

The example below illustrates gamma correction. Notice that in the call to `imadjust`, the data ranges of the input and output images are specified as empty matrices. When you specify an empty matrix, `imadjust` uses the default range of [0,1]. In the example, both ranges are left empty; this means that gamma correction is applied without any other adjustment of the data.

```
[X,map] = imread('forest.tif')  
I = ind2gray(X,map);  
J = imadjust(I,[],[],0.5);  
imshow(I)  
figure, imshow(J)
```

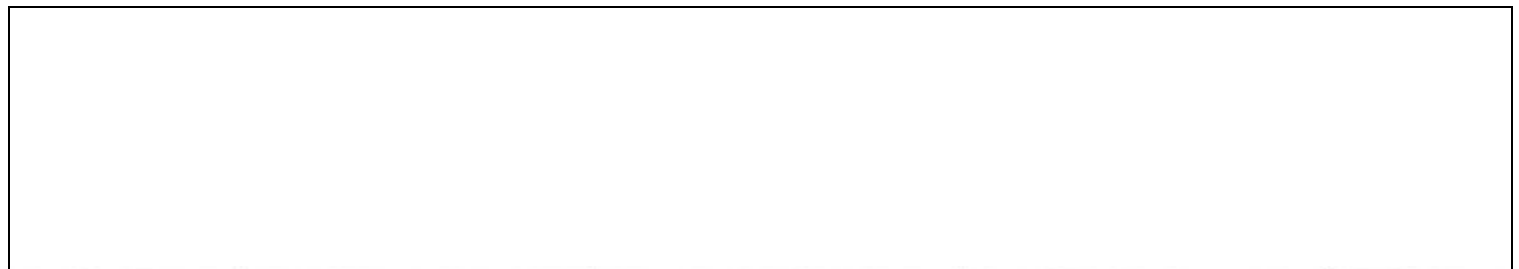
## Lab 2: Write a program for image compression

A standard matlab wavelet code package, [WAVELAB 802](#), to perform the transforms. The wavelets we chose to use were the Deslauriers wavelets of polynomial size 3.

The compression scheme we used was to set a threshold value that was some fraction of the norm of the entire wavelet transform matrix. If the magnitude of a wavelet in the representation was not larger than this value, it was not included in the compression. We then rebuilt an image which (to some degree that depended on how many bases we included) resembled the original image by running the inverse transform.

ORIGINAL IMAGE

The fabulous Lena



50

100

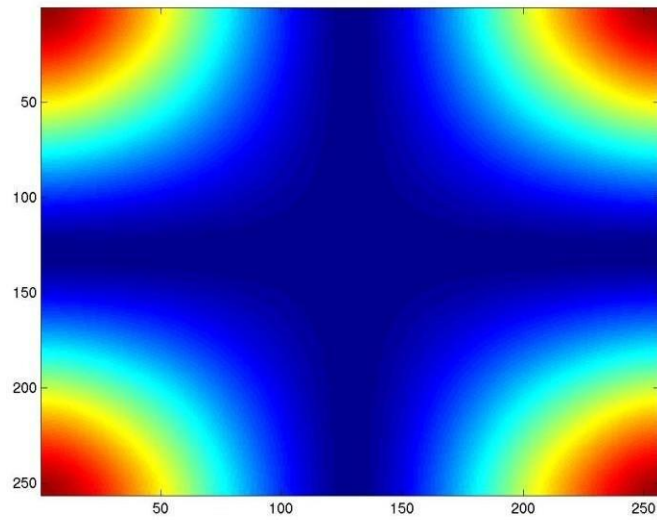
150

200

## BASIS VECTORS

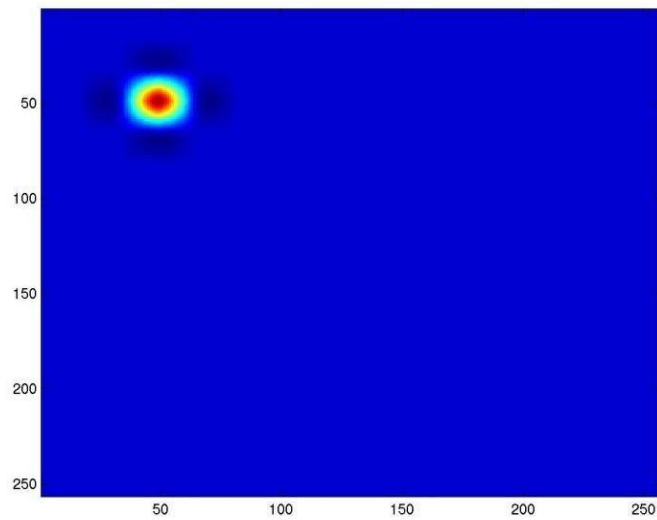
These are some basis vectors obtained by running the inverse wavelet transform on a matrix with a single nonzero value in it.

Deslaurier(1,1)



---

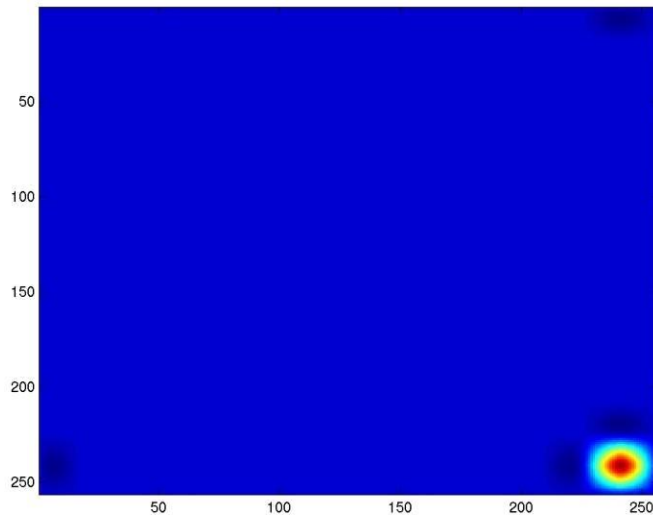
Deslaurier(10,10)



---

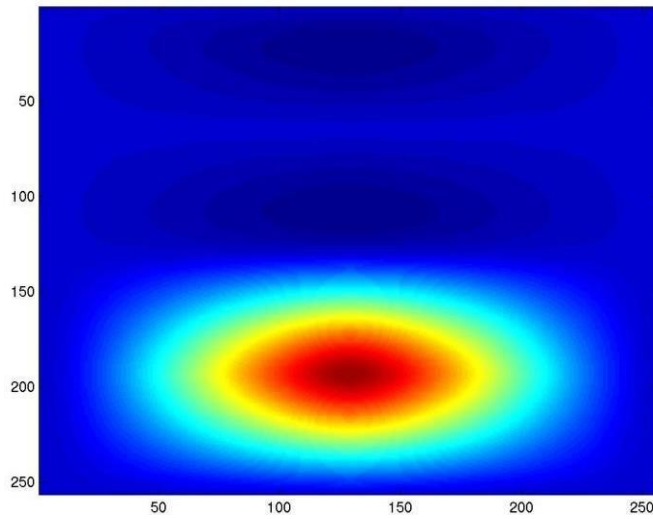
Deslaurier(16,16)





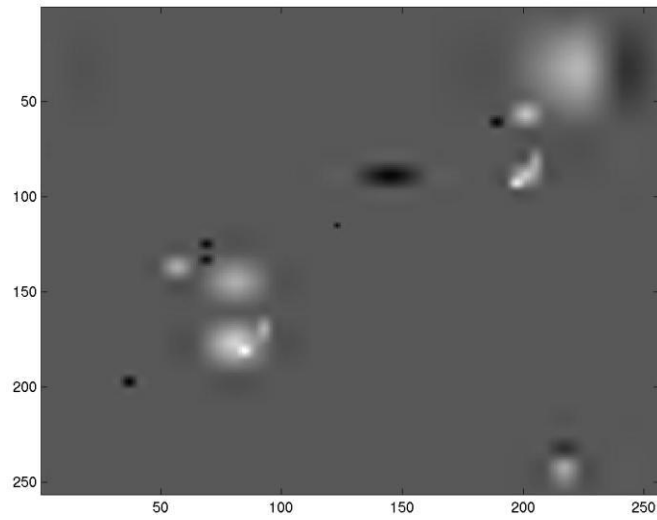
---

Deslaurier(4,2)



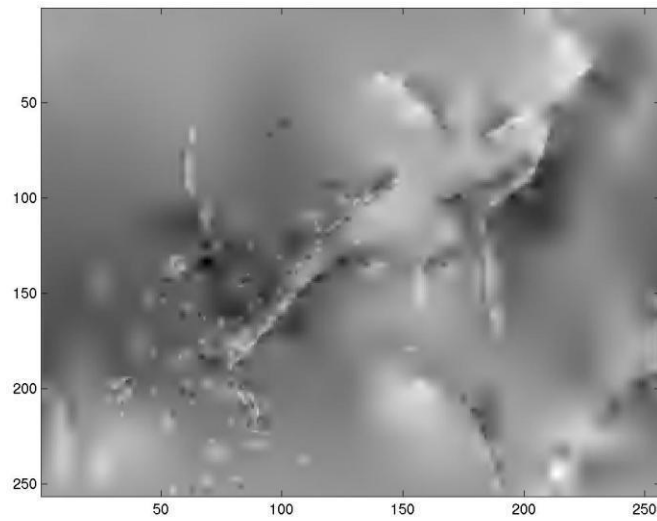
### COMPRESSED IMAGES

Threshold = .5, Bases included = 19, Compression ratio = 3400 : 1



---

Threshold = 1, Bases included = 470, Compression ratio = 140 : 1



---

Threshold = 2, Bases included = 2383, Compression ratio = 27 : 1



---

Threshold = 4, Bases included = 6160, Compression ratio = 10 : 1



---

Threshold = 8, Bases included = 12378, Compression ratio = 5 : 1



#### MATLAB CODE

```
load /home/nirav/elec301/lena256.mat;  
imagesc(lena256); colormap(gray(256));
```

```
[qmf, dqmf] = MakeBSFilter('Deslauriers', 3);
```

```
% The MakeBSFilter function creates biorthonormal filter pairs. The filter  
% pairs that we're making is an Interpolating (Deslauriers-Dubuc) filter  
% of polynomial degree 3
```

```
wc = FWT2_PB(lena256, 1, qmf, dqmf);
```

```
% wc correspond to the wavelet coefficients of the sample image  
% FWT2_PB is a function that takes a 2 dimensional wavelet transform  
% We specify the image matrix, the level of coarseness (1), the quadrature  
% mirror filter (qmf), and the dual quadrature mirror filter (dqmf)
```

```
% we take a tolerance which is some fraction  
% of the norm of the sample image
```

```
nl = norm(lena256) / (4 * norm(size(lena256)));
```

```
% if the value of the wavelet coefficient matrix at a particular  
% row and column is less than the tolerance, we 'throw' it out  
% and increment the zero count.
```

```
zerocount = 0;  
for i = 1:256  
for j = 1:256
```

```
        wc(i,j) = 0;
        zerocount = zerocount +
1; end
    end
end
```

```
x = IWT2_PB(wc, 1, qmf, dqmf);
imagesc(x);
```

```
% here is some sample code to view how these deslauriers wavelets look
```

```
[qmf, dqmf] = MakeBSFilter('Deslauriers',
3); for i = 1:256
    for j = 1:256
        wc(i,j) = 0;
    end
end
```

```
% this is the Deslauriers(4,2) matrix
```

```
wc(4, 2) = 1000;
x = IWT2_PB(wc, 1, qmf, dqmf);
imagesc(x);
```

## LAB 3: Write a program for color image processing

### Color Approximation

To reduce the number of colors in an image, use the `rgb2ind` function. This function converts a truecolor image to an indexed image, reducing the number of colors in the process. `rgb2ind` provides the following methods for approximating the colors in the original image: Quantization  
Uniform quantization Minimum variance quantization Colormap mapping

The quality of the resulting image depends on the approximation method you use, the range of colors in the input image, and whether or not you use dithering. Note that different methods work better for different images. See `Dithering` for a description of dithering and how to enable or disable it.

### Quantization

Reducing the number of colors in an image involves quantization. The function `rgb2ind` uses quantization as part of its color reduction algorithm. `rgb2ind` supports two quantization methods: uniform quantization and minimum variance quantization.

An important term in discussions of image quantization is RGB color cube, which is used frequently throughout this section. The RGB color cube is a three-dimensional array of all of the colors that are defined for a particular data type. Since RGB images in MATLAB can be of type `uint8`, `uint16`, or `double`, three possible color cube definitions exist. For example, if an RGB image is of class `uint8`, 256 values are defined for each color plane (red, blue, and green), and, in total, there will be 224 (or 16,777,216) colors defined by the color cube. This color cube is the same for all `uint8` RGB images, regardless of which colors they actually use.

The `uint8`, `uint16`, and `double` color cubes all have the same range of colors. In other words, the brightest red in a `uint8` RGB image appears the same as the brightest red in a `double` RGB image. The difference is that the `double` RGB color cube has many more shades of red (and many more shades of all colors). The following figure shows an RGB color cube for a `uint8` image.

Quantization involves dividing the RGB color cube into a number of smaller boxes, and then mapping all colors that fall within each box to the color value at the center of that box.

Uniform quantization and minimum variance quantization differ in the approach used to divide up the RGB color cube. With uniform quantization, the color cube is cut up into equal-sized boxes (smaller cubes). With minimum variance quantization, the color cube is cut up into boxes (not necessarily cubes) of different sizes; the sizes of the boxes depend on how the colors are distributed in the image.

**Uniform Quantization.** To perform uniform quantization, call `rgb2ind` and specify a tolerance. The tolerance determines the size of the cube-shaped boxes into which the RGB color cube is divided. The allowable range for a tolerance setting is `[0,1]`. For example, if you specify a

tolerance of 0.1, the edges of the boxes are one-tenth the length of the RGB color cube and the maximum total number of boxes is

$$n = (\text{floor}(1/\text{tol})+1)^3$$

The commands below perform uniform quantization with a tolerance of 0.1.

```
RGB = imread('peppers.png');  
[x,map] = rgb2ind(RGB, 0.1);
```

The following figure illustrates uniform quantization of a uint8 image. For clarity, the figure shows a two-dimensional slice (or color plane) from the color cube where red=0 and green and blue range from 0 to 255. The actual pixel values are denoted by the centers of the x's.

After the color cube has been divided, all empty boxes are thrown out. Therefore, only one of the boxes is used to produce a color for the colormap. As shown earlier, the maximum length of a colormap created by uniform quantization can be predicted, but the colormap can be smaller than the prediction because `rgb2ind` removes any colors that do not appear in the input image.

**Minimum Variance Quantization.** To perform minimum variance quantization, call `rgb2ind` and specify the maximum number of colors in the output image's colormap. The number you specify determines the number of boxes into which the RGB color cube is divided. These commands use minimum variance quantization to create an indexed image with 185 colors.

```
RGB = imread('peppers.png');  
[X,map] = rgb2ind(RGB,185);
```

Minimum variance quantization works by associating pixels into groups based on the variance between their pixel values. For example, a set of blue pixels might be grouped together because they have a small variance from the center pixel of the group.

In minimum variance quantization, the boxes that divide the color cube vary in size, and do not necessarily fill the color cube. If some areas of the color cube do not have pixels, there are no boxes in these areas.

While you set the number of boxes, `n`, to be used by `rgb2ind`, the placement is determined by the algorithm as it analyzes the color data in your image. Once the image is divided into `n` optimally located boxes, the pixels within each box are mapped to the pixel value at the center of the box, as in uniform quantization.

The resulting colormap usually has the number of entries you specify. This is because the color cube is divided so that each region contains at least one color that appears in the input image. If the input image uses fewer colors than the number you specify, the output colormap will have fewer than `n` colors, and the output image will contain all of the colors of the input image.

The following figure shows the same two-dimensional slice of the color cube as shown in the preceding figure (demonstrating uniform quantization). Eleven boxes have been created using minimum variance quantization.

For a given number of colors, minimum variance quantization produces better results than uniform quantization, because it takes into account the actual data. Minimum variance quantization allocates more of the colormap entries to colors that appear frequently in the input image. It allocates fewer entries to colors that appear infrequently. As a result, the accuracy of the colors is higher than with uniform quantization. For example, if the input image has many shades of green and few shades of red, there will be more greens than reds in the output colormap. Note that the computation for minimum variance quantization takes longer than that for uniform quantization.

### Colormap Mapping

If you specify an actual colormap to use, `rgb2ind` uses colormap mapping (instead of quantization) to find the colors in the specified colormap that best match the colors in the RGB image. This method is useful if you need to create images that use a fixed colormap. For example, if you want to display multiple indexed images on an 8-bit display, you can avoid color problems by mapping them all to the same colormap. Colormap mapping produces a good approximation if the specified colormap has similar colors to those in the RGB image. If the colormap does not have similar colors to those in the RGB image, this method produces poor results.

This example illustrates mapping two images to the same colormap. The colormap used for the two images is created on the fly using the MATLAB function `colorcube`, which creates an RGB colormap containing the number of colors that you specify. (`colorcube` always creates the same colormap for a given number of colors.) Because the colormap includes colors all throughout the RGB color cube, the output images can reasonably approximate the input images.

```
RGB1 = imread('autumn.tif');  
RGB2 = imread('peppers.png');  
X1 = rgb2ind(RGB1,colorcube(128));  
X2 = rgb2ind(RGB2,colorcube(128));
```



## Lab 4: Write a program for image segmentation

demonstration of global and local thresholding for segmentation

```
% threshdemo.m
% Demonstration of global and local threshold operations of an image

clear all
[tmp,idx]=imread('lena.bmp');
a=ind2gray(tmp,idx); % gray scale image of lena, value between 0 and 1
clear tmp idx
figure(1),clf,colormap('gray'),imshow(a),title('original Lena
image') [m,n]=size(a); % size of image a
b=reshape(a,m*n,1); % into a column vector
figure(2),hist(b,50),title('histogram of image')
% first do global thresholding
mu=rand(2,1); % value between 0 and 1, two clusters only
[W,iter,Sw,Sb,Cova]=kmeansf(b,mu); % W is the mean,
% Cova is the covariance matrices
% member: membership of each X: K by 1 vector of elements 1 to c
[d,member]=kmeantest(b,sort(W));
c=reshape(member-1,m,n);
clear d member b
figure(3),clf,colormap('gray'),imshow(c)
title('global threshold')

% next do local threshold, partition the image into 64 x 64 blocks
% and do threshold within each block
c=zeros(512,512); trials=0;
for i=1:8,
    for j=1:8,
        trials=trials+1;
        disp([int2str(trials) ' of 64 iterations ...']);
        tmp=a(64*(i-1)+1:64*i,64*(j-
1)+1:64*j); tmpi=reshape(tmp,64*64,1);
        mu=sort(rand(2,1)); % value between 0 and 1, two clusters only
        [W,iter,Sw,Sb,Cova]=kmeansf(tmpi,mu); % W is the mean,
        % Cova is the covariance matrices
        % member: membership of each X: K by 1 vector of elements 1 to c
        [d,member]=kmeantest(tmpi,sort(W)); c(64*(i-1)+1:64*i,64*(j-
1)+1:64*j)=reshape(member,64,64);
    end
end
figure(4),clf,colormap('gray'),imshow(c-
1), title('local threshold, 64x64 block');
```

## Lab 5: Write a program for image morphology

```
demonstrate boundary extraction, interior filling

% demonstrate morphological boundary extraction
%
clear all, close all

A0=imread('myshap4.bmp');
imshow(A0); % a heart shape hand drawing
title('original image');
pause
% A0 contains mostly 1s and the drawing contains 0s, uint8
A1=1-double(A0); % invert black and white

B=ones(3);
A2=imopen(imclose(A1,B),B); % fill 1 pixel hole and remove sticks

A3=imfill(A2,[100 100]); % fill the interior

A=double(A2) + double(A3);

imshow(A),title('after interior filling using
imfill'); pause
Ab=A-double(erode(A,B));

imshow(Ab), title('extracted boundary');

clear A1 A2 A3; Ac=Ab;

vidx=[[1:20:280] 280];

Ac(vidx,:)=1; Ac(:,vidx)=1;

imshow(Ac)
```

## Lab 6: Program for Image Restoration

```
% load image
X = double(imread('midterm.bmp'));
X = X-mean(X(:));
[m,n] = size(X);

% show image and
DFT fX = fft2(X);
figure(1)
imshow(real(X), []);
title('original
image') figure(2)
imshow(fftshift(log(1+abs(fX))), [])
title('log(1+|DFT|) original image');

% model      blurring
filter s = 24; t= 0;
u = 1; v=0;
g = [ones(s,1);zeros(m-s-t,1); ones(t,1)];
%g      =      [ones(s,1);0.99;      zeros(m-s-t-2,1);0.99;
ones(t,1)]; g = g/sum(abs(g));
h      =      [ones(u,1);      zeros(n-u-v,1);
ones(v,1)]; h = h/sum(abs(h));
f =g*h';
ff = fft2(f);
figure(3)
imshow(fftshift(log(1+abs(ff))), [])
title('amplitude: log(1+|OTF|)');
figure(4)
imshow(fftshift(angle(ff)), [])
title('phase of OTF');

% get pseudo inverse filter
ff(find(abs(ff)==0))=NaN;
aff = abs(ff);
pff = ff./aff;
apiff = 1./aff;
ppiff = conj(pff);
ppiff(find(isnan(ppiff))) =
0; cap = 11;
apiff(find(apiff > cap)) =
cap; apiff(find(isnan(apiff)))
= 0; piff = apiff.*ppiff;

% deblur and show
frX = piff.*fX;
rX =real(ifft2(frX));
figure(5)
imshow(fftshift(log(1+abs(frX))), [])
```

```
title('log(1+|DFT|) restored  
image') figure(6)  
imshow(rX(:,5:n),[]);  
title('restored image')
```

## Lab 7: Program for Edge detection

```
% demonstrate edge detection

% numbers of
colors sncols=128;
ncols=32;

% get image from MATLAB
image load('trees');

% show original image
figure(1);
showimg(real(X),sncols);
drawnow;

% construct convolution
functions [m,n] = size(X);
gs = [1 -1]; ge = [];
hs = [1 -1]; he = [];
g = [gs,zeros(1,m-length(gs)-length(ge)),ge];
h = [hs,zeros(1,n-length(hs)-length(he)),he];

% construct convolution matrices as sparse
matrices Y = spcnvmat(g);
Z = spcnvmat(h);
Wg = Y*X;
Wh = X*Z';

% show transformed images
figure(2);
showimg(Wg,ncols);
drawnow;

figure(3)
showimg(Wh,ncols);
drawnow;

figure(4)
showimg(abs(Wg)+abs(Wh),ncols);
drawnow;
```

## Lab 8: Blurring 8 bit color versus monochrome

```
% smoothing in eight bit color and monochrome
% parameter definition

% get image from MATLAB
library load('clown');

% construct convolution functions
[m,n] = size(X);
gs = [0.5 0.5]; ge = [];
hs = [0.5 0.5]; he = [];
g = [gs,zeros(1,m-length(gs)-length(ge)),ge];
h = [hs,zeros(1,n-length(hs)-length(he)),he];

% construct convolution matrices and blur sparse
matrices Y = spcnvmat(g);
Z = spcnvmat(h);
W = Y*X*Z';

% show original and blurred images
figure(1);
imshow(X,[]);
figure(2);
imshow(W,[]);
figure(3);
imshow(X,[]);
colormap(map)
figure(4);
imshow(W,[]);
colormap(map)
```

## Mini Project

### Segmentation in handwritten document

#### Horizontal and Vertical Histogram

Horizontal and Vertical Histogram technique is one the handwritten script identified technique which uses the Matra/Shirorekha based feature, In this technique longest horizontal run of black pixels on the rows of a Bangla text word will be much longer than that of English script. This is so because the characters in a Bangla word are generally connected by matra/Shirorekha (see Fig.2). Here row-wise histogram of the longest horizontal run is shown in the right part of the words. This information has been used to separate English from Bangla script. Matra feature is considered to be present in a word, if the length of the longest horizontal run of the word satisfies the following two conditions: (a) if it is greater than 45% of the width of a word, and (b) if it is greater than thrice of the height of busy-zone.

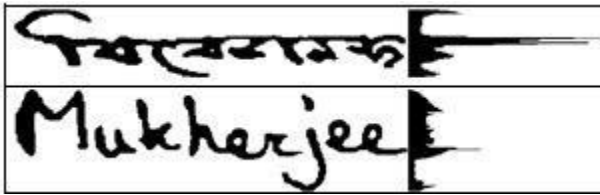


Fig. 2. The matra/Shiroreka feature in Bangla and English words

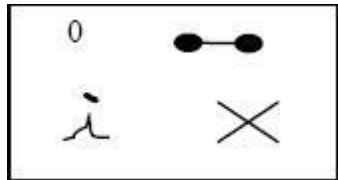
#### Curvature Information and Local Extreme of Curvature

Curvature information gives a unique, viewpoint independent description for local shape. In differential geometry, it is well known that a surface can be reconstructed up to second order (except for a constant term) if the two principal curvatures at each point is known, by using the first and second fundamental forms. Therefore, curvature information provides a useful shape descriptor for various tasks in computer vision, ranging from image segmentation and feature extraction, to scene analysis and object recognition. In the field of handwritten alphanumeric character recognition, many researcher use difference method for recognition such as geometrical and topological feature, statistic feature, and other algorithms to perform recognition based on character shape. But for a good handwritten recognition system depends on main two attributes, first selected feature gathering from a handwritten character, second the recognizers that trained to remember feature of each character in order to cluster and recognize each input character. In curvature information handwritten character is used as a sequence of curve segments. Each curve segment is characterized by its degree of curvature which is measure by the cumulative angle difference from all sampling points with in the segments. If the cumulative is minus, it is a clockwise curve. Since some characters may consist of the same number of segments with the same curve (ex. one segment with clockwise curve) other features of segments are gathering to distinguish thes

characters.

## Topological Features

Topological features such as loops is a group of white pixels surrounded by black ones ,end points is point with exactly 1 neighboring point ,dots a cluster of say 1-3 pixels and junction is a point with more than 2 neighbors all in thinned black and white images are shown in fig 3.



**Fig.3. Loop, End points, a Dot and Junctions.**

**Dots:** Dots above the letters “i” and “j” can be identified with a simple set of rules. Short, isolated strokes occurring on or above the half-line are marked as potential dots.

**Junctions:** Junctions occur where two strokes meet or cross and are easily found in the skeleton as points with more than two neighbors.

**Endpoints:** Endpoints are points in the skeleton with only one neighbor and mark the ends of strokes, though some are artifacts of the skeletonization algorithm.

**Loops:** Loops are found from connected-component analysis on the smoothed image, to find areas of background color not connected to the region surrounding the word. A loop is coded by a number representing its area.

## Parameters of polynomials

Recognition for handwritten mathematical expressions is more complicated than for ordinary handwriting because of the two-dimensional nature of the input, because there are more symbols involved, and because the greater difficulty of using contextual information (e.g. harder to provide a dictionary of words or phrases against which the input is probably coming from). Since past techniques have not provided a complete solution. To overcome this problem we use parameters of polynomial as one of the technique for feature extraction. Here we take the idea of Chebyshev polynomials. Using a collection of writing samples of mathematical symbols, we find that in many cases it provides a succinct way to model the stylus movements of actual test users. The principal contributions of this technique are:

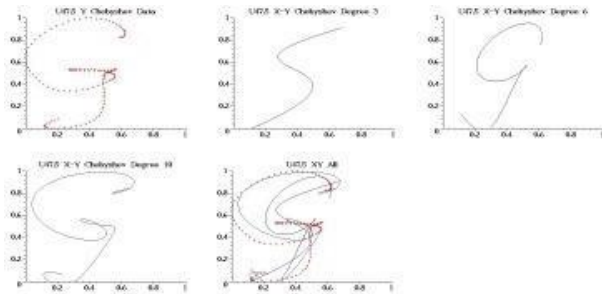
- To find that modeling  $x(t)$  and  $y(t)$  as Chebyshev series accurately captures the shape of handwritten mathematical characters using few parameters.
- To find the polynomial coefficients from the writing samples form clusters which often contain the same character as written by different test users.



For our analysis, we assume that handwriting traces are provided as sequences of  $(x_i, y_i, t_i)$  tuples that have been normalized so  $t_0 = 0$  and  $t_n = 1$ . The  $(x, y)$  trace of character is shown in figure 4. For basis functions we use Chebyshev polynomials of the first kind, defined by  $T_n(t) \equiv \cos(n \arccos t)$  and orthonormal for the inner product  $(f, g) = \int_{-1,1} f(t)g(t)dt$ . The Chebyshev series for X and Y is

$$X(t) = \sum_{i=0}^{\infty} \alpha_i T_i(t)$$

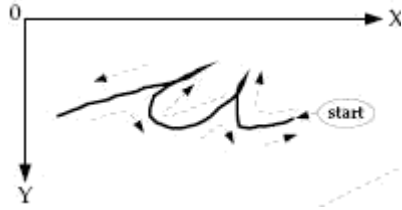
$$Y(t) = \sum_{i=0}^{\infty} \beta_i T_i(t)$$



### The $(x, y)$ trace of G

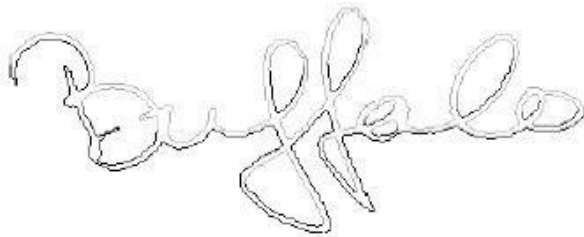
## Contour Information

Given a binary image, it is scanned from top to bottom and right to left, and transitions from white (background) to black (foreground) are detected. The contour is traced counterclockwise outside the pattern (clockwise for interior contours) and expressed as an array of contour elements shown in figure 5. Each contour element represents a pixel on the contour and contains fields for the  $x, y$  coordinates of the pixel, the slope or direction of the contour into the pixel, and auxiliary information such as curvature.



Techniques that are useful in recognition of words are described in this subsection: (i) Determination of upper and lower contours of the word, (ii) Determination of significant local extrema on the contour, (iii) Determination of reference lines, and (iv) Determination of word length.

1. **Upper and lower contours:** Division of an exterior contour into upper and lower parts (Figure 6) involves the detection of two “turnover” points on the contour - the points at which the lower contour changes to upper contour and vice versa. Given that the exterior contour is traced in the counterclockwise direction, the upper contour runs predominantly from right to left and the lower predominantly from left to right. The left end of the leading ligature and the right end of the ending ligature constitute turnover points.



**Splitting a contour to upper and lower parts. The upper contour is shown in dotted lines and the lower contour is shown in bold lines**

2. **Local Contour Extrema:** Local extrema represent a powerful abstraction of the shape of the word. Local Y-extrema is simply derived from the y-coordinates of the pixels on the chaincoded contour. The primary challenge is the detection and rejection of spurious extrema arising from irregularities in the contour. Heuristic filters are used to eliminate spurious extrema. These include checks on the distance of the detected extremum from previous extrema detected, spatial position relative to other extrema, the slope of the contour in the neighborhood of the extremum, and so forth. Majority of spurious extrema in discrete writing are due to ends of strokes used to form characters, and generally occur in the middle zone of the word. Fragmentation in the binary image due to suboptimal binarization or poor resolution often leads to broken strokes and spurious extrema. Since the upper contour flows effectively from right to left, left to right excursions of the contour must be followed by right to left retraces, and this leads to additional extrema being detected. Extrema found on such uncharacteristic excursions must be discarded lest they lead to spurious ascenders. A similar problem arises with right-to-left stretches of the lower contour in the context of spurious descenders. Let us refer to extrema on such uncharacteristic excursions of the upper and lower contours as being directionally invalid. Directional validity is conveniently determined from the slopes of the contour elements into and out of the extremum and is sufficient to discard most spurious extrema.

3. **Reference Line:**

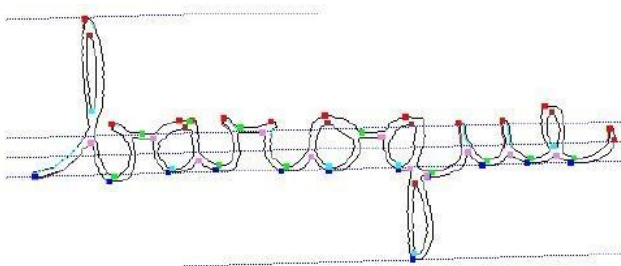
A time-tested technique for global reference line determination is based on the vertical histogram of pixels. The method makes the implicit assumption that the word was written horizontally and scanned in without skew. Consequently, the method fails for words with significant baseline skew. Unfortunately, baseline skew is present to varying degrees in most freeform handwriting. Baseline skew can be corrected by estimating the skew of the word and applying a rotation or shear transformation on the image. An alternative to skew correction is the use of reference lines of the form  $r_i(x) = m * x + c$  where  $m$  is the skew angle and  $c$  is the offset of the corresponding reference line from the x-axis. Angled reference lines may be computed from the angular histogram at the skew angle.

The best-fit line through the minima points may be determined by a least-square linear regression procedure (Figure 7). Minima that do not fall in the vicinity of the implicit baseline either correspond to descenders, or are spurious. The halfline may be determined as the regression line through upper contour maxima. However upper contour maxima are often poorly aligned, and spurious points are difficult to detect and remove, especially in more discrete writing (non-cursive) styles. Consequently the resulting halfline is often erroneous. Reference lines computed from the angular histogram at the skew angle of the baseline have proved to be more reliable (Figure 7(c)).



. (a) Exterior contour of word showing lower-contour minima. (b) Baseline determined as regression line through minima. (c) Angular reference lines from angular histogram at skew angle.

**4. Word Length, Ascenders, and Descenders:** The number of minima on the lower contour of a word image is a good estimate of the length of a word. It is expected that such a length would be proportional to the number of letters in the word. Figure 4 shows the length estimate of the word as 11 and also shows one ascender and one descender. The positions of ascenders and descenders along with the length of the word are used as features. An ascender refers to the portion of a letter in a word that rises above the general body of the word. A descender refers to the portion of the word that falls below the general body of the word. Ascenders and descenders can be appropriately selected from the extremas of the upper and lower contour of the word.



**Local contour extrema: maximas and minimas on the exterior and interior contours are marked along with the reference lines. The loop associated with 'b' that rises above the reference lines in the middle is called an ascender and the loop associated with the 'q' that falls below the reference lines in the middle is called a descender.**